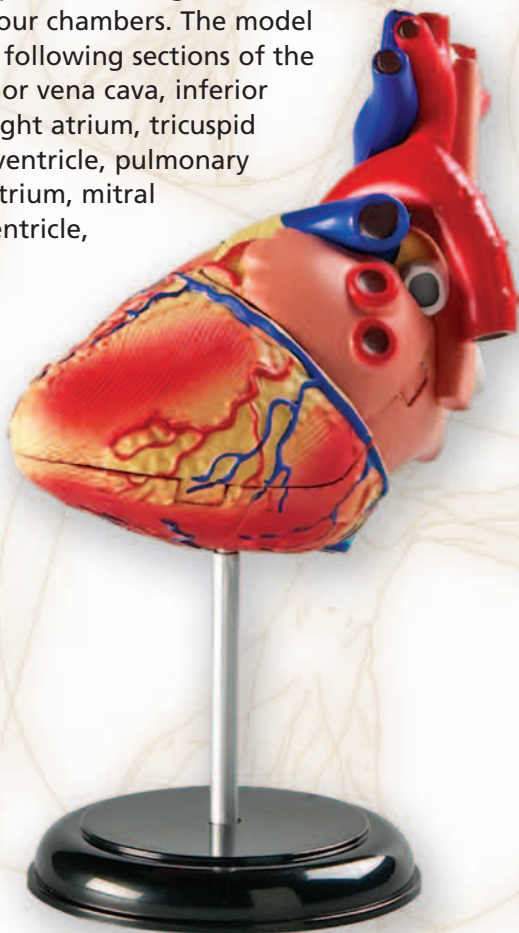
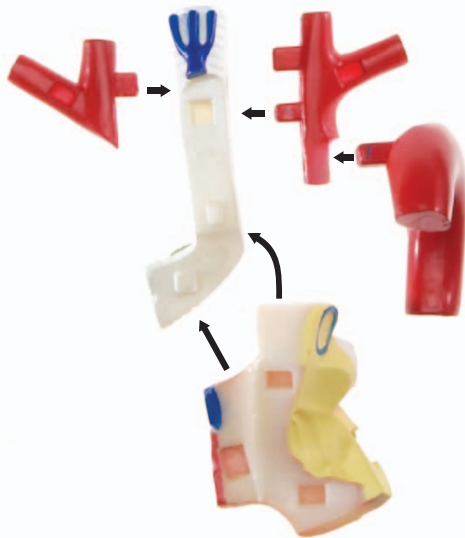
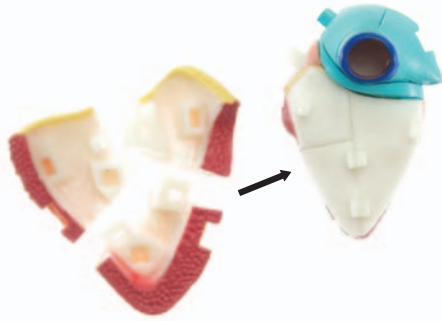
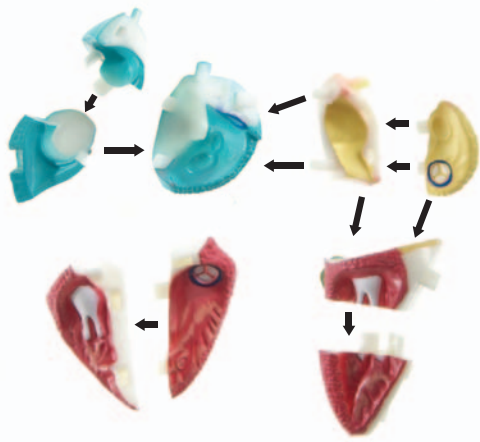


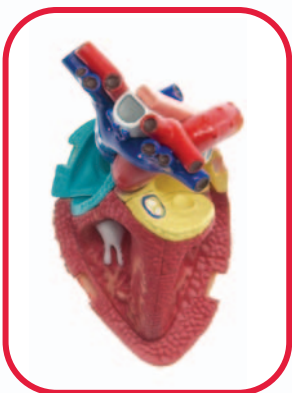
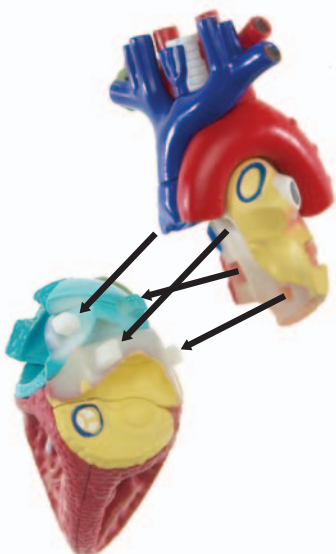
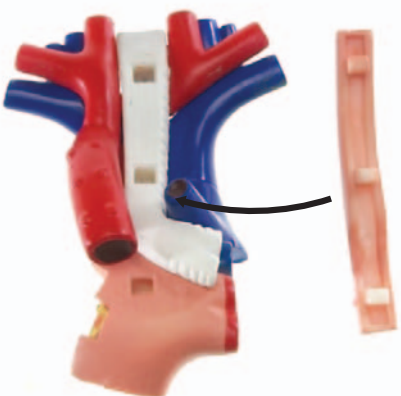
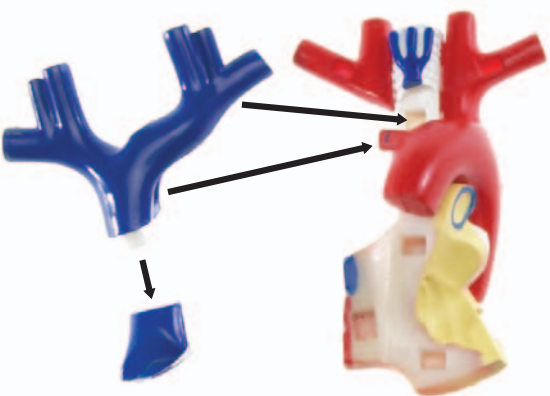
# Human Anatomy Model

## Assembly Guide

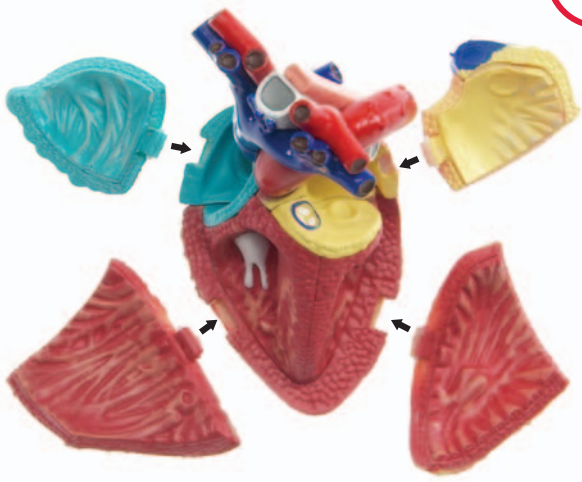
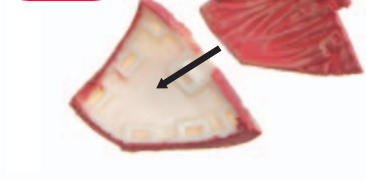
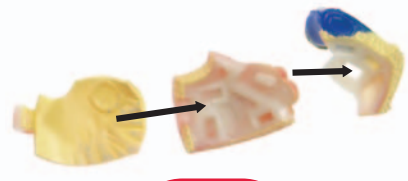
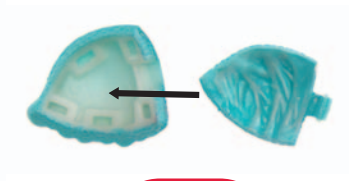
This set of twenty-nine pieces connects to form a human heart that displays the organ's major parts. Some pieces are hinged to exhibit the heart's four chambers. The model features the following sections of the heart: superior vena cava, inferior vena cava, right atrium, tricuspid valve, right ventricle, pulmonary artery, left atrium, mitral valve, left ventricle, and aorta.

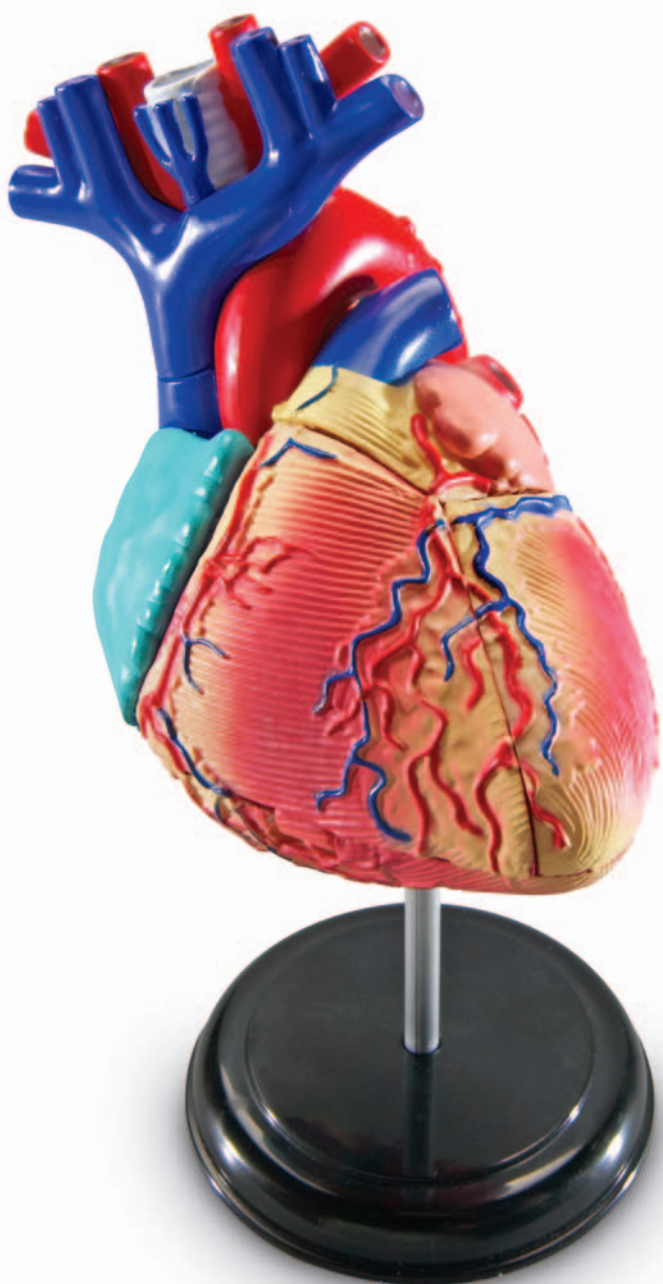


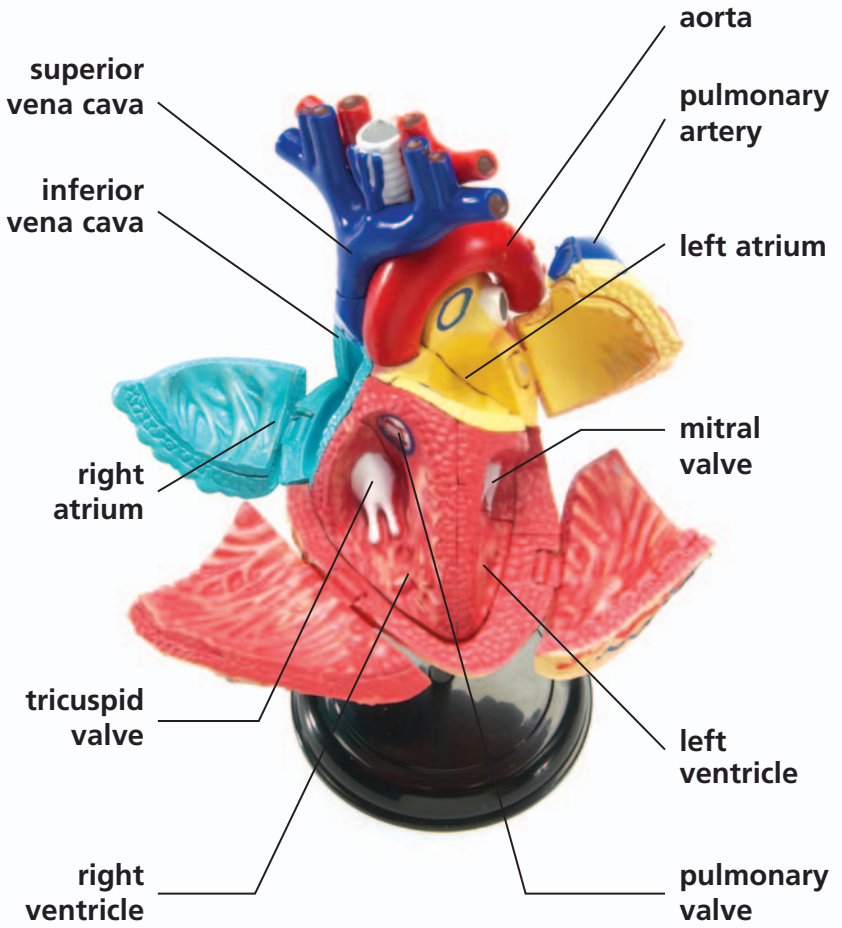




# Assembly









**superior vena cava** large vein that carries oxygen-poor blood from the upper body into the right atrium

**inferior vena cava** large vein that carries oxygen-poor blood from the lower body into the right atrium

**right atrium** upper-right chamber of the heart that directs oxygen-poor blood from the superior and inferior vena cava to the right ventricle

**tricuspid valve** separates the right atrium and right ventricle, preventing blood from flowing in the wrong direction

**right ventricle** lower-right chamber of the heart that collects oxygen-poor blood from the right atrium, pumping it through the pulmonary valve into the pulmonary artery

**pulmonary valve** located between the right ventricle and pulmonary artery that prevents blood from flowing in the wrong direction

**pulmonary artery** the only artery that carries oxygen-poor blood from the heart directly to the lungs

**left atrium** upper-left chamber of the heart that pumps oxygen-rich blood from the lungs into the left ventricle

**mitral valve** separates the left atrium and left ventricle, preventing blood from flowing in the wrong direction

**left ventricle** lower-left chamber of the heart that pumps blood from the left atrium through the aorta to the entire body, except for the lungs.

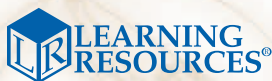
**aorta** largest artery in the body; carries oxygen-rich blood from the left ventricle to the rest of the body, except for the lungs

**Look for these related  
items from Learning Resources®**

LER 1902 Cross-Section Heart Model

LER 3330 Spill Your Guts™ A Human Body Game

LER 3336 Anatomy Model - Human Torso



For a dealer near you, call:  
(847) 573-8400 (U.S. & Int'l)  
(800) 222-3909 (U.S. & Canada)  
+44 (0)1553 762276 (U.K. & Europe)

**[www.LearningResources.com](http://www.LearningResources.com)**



© Learning Resources, Inc., Vernon Hills, IL (U.S.A.)  
Learning Resources Ltd., King's Lynn, Norfolk (U.K.)  
Please retain our address for future reference.  
Made in China. LRM3334-GUD